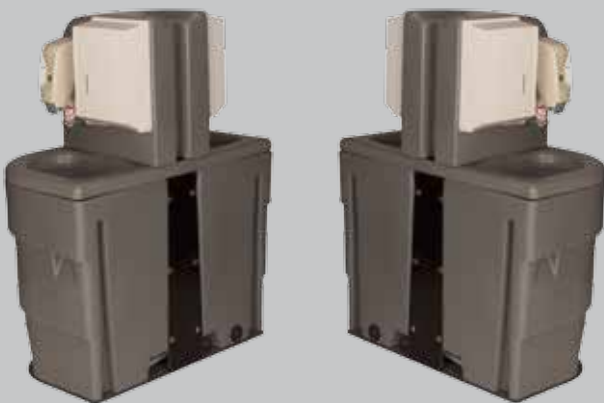


WAVE



- :: **Dimensions (HxWxD):** 1,16 m x 1,07 m x 0,61 m
- :: **Weight:** 55 kg
- :: **Capacity fresh water:** 160 l
- :: **Capacity waste water:** 176 l
- :: **Water per use:** +/- 250 ml (4 pumps)
- :: **Number of uses:** +/- 630

All dimensions are per two-person Wave unit

WAVE

This vandal resistant free standing tank can be placed back-to-back to create a refreshing little «island», accommodating up to four people at once. Its high capacity tank permits a large number of uses.

The Wave is standard equipped with a foot pump and is big enough for fingertip to elbow washing clearance. It can be optionally equipped with soap and/or towel dispensers.

Features



- ❶ Hands-free foot pump
- ❷ Hole for umbrella (umbrella not included)

Options



- ❶ Soap dispenser (800 or 1000 ml)
- ❷ Paper towel dispenser



A compact, fully enclosed wash station with a rugged vandal resistant design.

The rugged flip-up hood makes refilling easy, while protecting the dispensers from breaking.

The second hood provides flip-up access to the water reservoirs for complete service and cleaning.

Satellite Europe
67 av. de la Toison d'Or
B-1060 Brussels - Belgium
Tel: 0032/ 2-542 56 56
Fax: 0032/ 2-542 56 57

Satellite Germany
Robert-Bosch-Straße 37
D-42489 Wülfrath - Germany
Tel: 0049 / 2058-9222-0
Fax: 0049/ 2058-9222-33

Satellite UK
Lagrange, Lichfield Road Industrial Estate
Tamworth, Staffs B79 7XD - UK
Tel: 0044 (0)18-27-72-39-99
Fax: 0044(0)18-27-6-26-44

Satellite
info@satelliteindustries.com